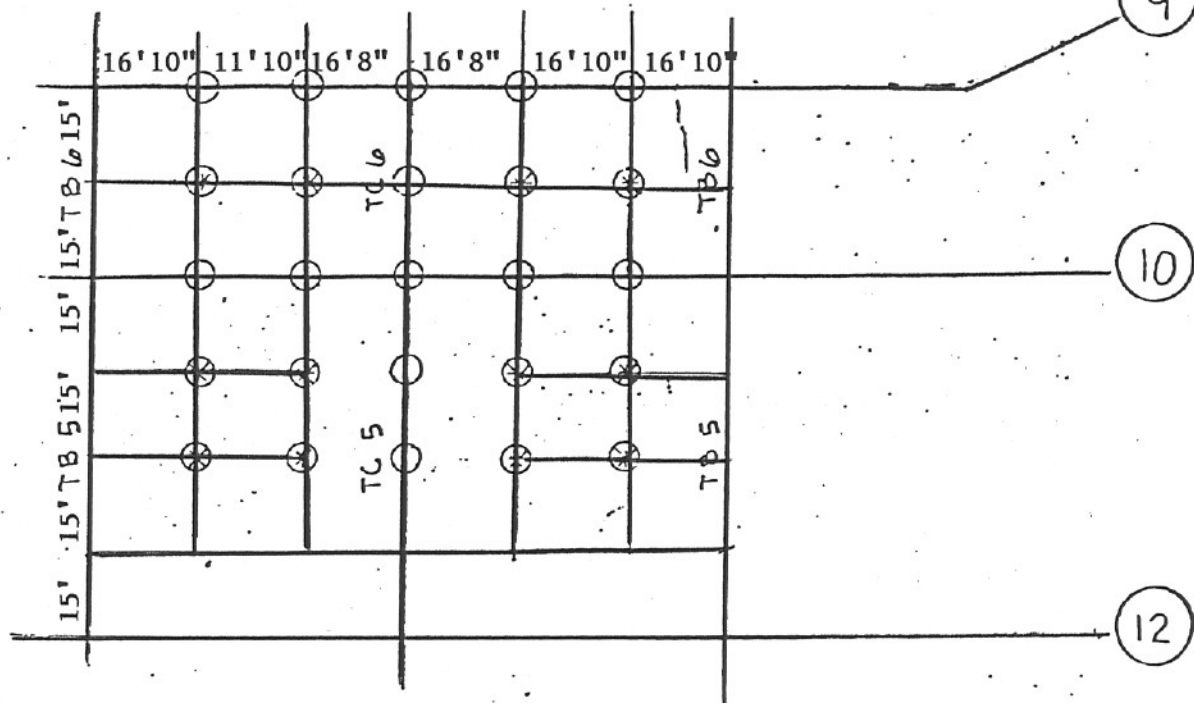


3 EQ. SPA.

TRUSS T2

TRUSS T3

TRUSS T4



ASSUMED STAGE RIGGING LOCATIONS

Roof trusses are designed for stage rigging loads in the locations shown. A 5,000 pound rigging load may be applied only at the locations indicated. The sum of stage rigging loads may not exceed 40,000 pounds. Where rigging locations occur between roof trusses (indicated ) additional framing, not in this contract, is required. No rigging is permitted from longspan steel joists.